

Compensation Plan

The LifeWave Compensation Plan provides an exceptional opportunity for both immediate and long-term income. It combines the best features of different types of network marketing pay plans. There are **4 key components** to the LifeWave compensation plan.



Immediate Income

1. Retail Profits
2. Initial Product (Fast Start) Bonuses

Long Term Residual Income

3. Binary Commissions
4. Commissions Matching Bonuses

Commission Qualifications*

[*View the Commission Qualifications](#)

1. Retail Profits

LifeWave makes it easy for you to earn by selling to your retail customers. You may earn money by purchasing products directly from LifeWave at wholesale prices and selling directly to your customers. Your customers can also order products directly from LifeWave at retail prices. LifeWave automatically sends you the retail profits (difference between wholesale and retail) each week. To make it even simpler to create continuous revenue, you may even set up your retail customers for ongoing Autoship. Any member may earn retail profits. [back to top](#)

2. Initial Product Bonuses (Fast Start Bonuses)

This is a way to begin earning money as soon as you enroll with LifeWave. Every qualifying LifeWave member may earn bonuses each time they personally enroll a new member. In order to qualify, you must be in an active status at the time of enrolment, *(to be considered active you must have an order with a minimum of 55PV within the last 5 pay periods)*. The amount depends on the rank at which the new member enrolls.

For each new member you enroll, you earn:

Diamond	Gold	Silver	Bronze
\$500*	\$100	\$50	\$15

Amounts may vary slightly outside the USA

Initial Product Bonuses are also paid whenever a personally enrolled member purchases an upgrade kit to move from any lower rank to any higher rank. In that case, the bonus is the difference between the bonus paid for the lower rank and the bonus paid for the higher rank.

Change in Rank	Bonus
Starter to Bronze	\$15
Starter to Silver	\$50
Starter to Gold	\$100
Bronze to Silver	\$35
Bronze to Gold	\$85
Silver to Gold	\$50
Gold to Diamond	\$400*

Amounts may vary slightly outside the USA

Members may purchase an upgrade kit at any time. There are no restrictions.

*Split among the sponsor and the qualifying upline, see below for details:

For example, if you sponsor a Diamond as a:

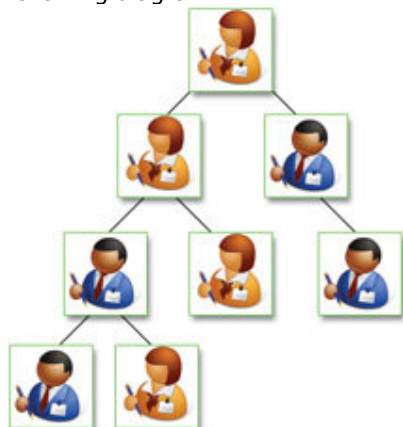
- Bronze, Silver or Gold receive \$200, your Manager, Director and Senior Director will each receive \$100
- Manager - receive \$300, your Director and Senior Director will receive \$100 respectively
- Director - receive \$400, your Senior Director will receive \$100

- Senior Director - receive the entire bonus

[back to top](#)

3. Binary Commissions

The LifeWave Pay Plan is based on a Binary structure. That means that each position in the structure may have a maximum of two positions under it – one on the left and one on the right. This can be seen in the following diagram.



When you enroll new members, you place them on your left or right side. If the positions immediately beneath you are already taken, then you place them under the first available position on your left or right side.

Your commissions are based on the purchases of everyone under your position, no matter who enrolled them.

There could be 1,000 people below you on the right side and 5,000 people below you on the left side enrolled by you, by the people you sponsor, or by any of the people above you or the people that they sponsor. This is a powerful way to build residual income based on the your own efforts and the efforts of the people above you.

Qualifying members earn each time the purchase volume point's totals 330 on one of the "legs" and 660 on the other "leg". It is that simple.

You must have a minimum of 55PV in the 5-week period ending on the Sunday of the commission week being paid in order to cycle.

Qualifying members must meet two simple requirements to earn. They are as follows:

1. You must meet the downline active requirement and
2. You need a total of 990BV to cycle.
(330 on your profit leg and 660 on your power leg. Your power leg is defined as the leg with the most volume. Your power leg could possibly change from week to week.)

That's it! Every time you obtain these qualifiers you will earn \$50.00!

Downline Active Status requirement

This requirement states that each Distributor in your downline who helps to qualify you for bonuses and/or commissions must also maintain Active status.

As an example, if you are a Silver Distributor, to qualify for 1st Level Matching Bonuses (in addition to the other qualifications) you must have sponsored at least 2 Silver or Gold Distributors Left, and at least 2 Silver or Gold Distributors Right.

This qualification requires that each of these 4 Distributors who are helping to qualify you for 1st Level Matching Bonuses must be Active (i.e., must purchase a minimum of 55 PV each month).

Flushing Rule

You must purchase a minimum of 55PV every 35 days in order to remain Active. If you allow more than 35 days between orders you will become Inactive and your Business Volume will flush. Your BV on the left leg and the right leg will be flushed and your volume totals will be changed to 0.

***Our weekly commission limits are as follows:**

- BV Cycle pay max for Bronze is \$5,000.00 per week
- BV Cycle pay max for Silver is \$15,000.00 per week
- BV Cycle pay max for Gold is \$25,000.00 per week

Payout Cap

LifeWave's compensation plan features a very generous payout cap of 60% which includes binary commissions and matching bonuses, but not Fast Start Bonus money.
[back to top](#)

4. Commission Matching Bonuses

This is a second way to create residual income. It is based on the organization that you have built. You can earn bonuses based on the Binary Commissions earned by the people you personally enroll, by the people they personally enroll, and the people they personally enroll.

Sponsorship Level	Bonus
Level 1 Distributors You Enroll	25%
Level 2 Distributors Enrolled by your 1st generation	20%
Level 3 Distributors Enrolled by your 2nd generation	20%

Amounts may vary slightly outside the USA

Look how simply the pay plan is designed for you to earn commissions and bonuses...



You earn from Binary Commissions, Initial Product Bonuses and 3 Levels of Matching Bonuses.

Payout Cap

LifeWave's compensation plan features a very generous payout cap of 60% which includes binary commissions and matching bonuses, but not Fast Start Bonus money.
[back to top](#)

Commission Qualifications

To Earn	Minimum Qualification
Fast Start Bonus (Initial Product Bonus)	Be a Bronze Rank Member or above and purchase a minimum of 55 PV during the 5-week period ending on the Sunday of the commission week being paid.
Other Commissions and Bonuses	Enroll 1 Member on the left leg and 1 Member on the right leg <i>who must be on active status</i> ; and purchase products for at least 55 PV during the 5-week period ending on the Sunday of the commission week being paid.
1st Level Matching Bonus	Be a Silver Rank Member or above and purchase products with a minimum of 110 PV during the 5-week period ending on the Sunday of the commission week being paid. If a Silver Rank Member, then have personally enrolled at least 2 Silver Rank or above members in each leg <i>who must be on active</i>

	<p><i>status.</i></p> <p>If a Gold Rank Member, then have personally enrolled at least 1 Silver Rank or above member in each leg <i>who must be on active status.</i></p>
2nd Level Matching Bonus	<p>Be a Gold Rank Member or above and purchase products with a minimum of 110 PV during the 5-week period ending on the Sunday of the commission week being paid.</p> <p>Have personally enrolled at least 2 Silver Rank or above Members in each leg <i>who must be on active status.</i></p> <p>In addition, have a minimum of 4 cycles in the commission week being paid.</p>
3rd Level Matching Bonus	<p>Be a Gold Rank Member or above and purchase products with a minimum of 110 PV during the 5-week period ending on the Sunday of the commission week being paid.</p> <p>Have personally enrolled at least 3 Silver Rank or above Members in each leg <i>who must be on active status.</i> 1 Member in each leg must qualify for 2nd Level Matching Bonuses.</p> <p>Also have a minimum of 8 cycles in the commission week being paid.</p>

*Amounts may vary slightly outside the USA
The plan may be changed by the company as required.

Ready to become a LifeWave Distributor?

Start Your "Power of The Patch" Business

From Only \$99.00

Go Back To

[Join Now Become a Distributor](#)

(Sponsor's Id 703004)